



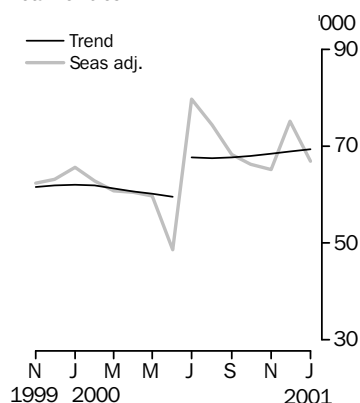
NEW MOTOR VEHICLE REGISTRATIONS

AUSTRALIA
PRELIMINARY

EMBARGO: 11:30AM (CANBERRA TIME) FRI 23 FEB 2001

JANUARY KEY FIGURES

New vehicle registrations
Total vehicles



TREND ESTIMATES

	Jan 2001	% change Dec 2000 to Jan 2001	% change Jan 2000 to Jan 2001
Total new motor vehicle registrations	69 498	0.9	12.0
Passenger vehicles	58 986	0.7	15.6
Other vehicles	10 512	1.8	-4.7

SEASONALLY ADJUSTED

	Jan 2001	% change Dec 2000 to Jan 2001	% change Jan 2000 to Jan 2001
Total new motor vehicle registrations	66 921	-11.1	2.0
Passenger vehicles	56 211	-12.6	3.6
Other vehicles	10 710	-2.2	-6.1

ORIGINAL ESTIMATES

	Jan 2001	% change Dec 2000 to Jan 2001	% change Jan 2000 to Jan 2001
Total new motor vehicle registrations	55 629	-24.2	10.7
Passenger vehicles	47 447	-24.9	12.3
Other vehicles	8 182	-19.8	2.0

JANUARY KEY POINTS

TREND ESTIMATES

- The trend estimate for total new motor vehicle registrations rose by 0.9% in January 2001 compared with the previous month. In January, passenger vehicles rose by 0.7% and other vehicles rose by 1.8%.

Adjustments to Victorian data will appear in the next issue (see page 2). These are expected to cause revisions to trend estimates for recent months.

TAKE CARE!
Trend estimates are revised as new monthly data become available.

SEASONALLY ADJUSTED ESTIMATES

- The seasonally adjusted estimate for total new motor vehicle registrations fell by 11.1% in January 2001 compared with the previous month. Falls were recorded in all states and territories except for the Australian Capital Territory where a very small rise was recorded.

ORIGINAL ESTIMATES

- Total new motor vehicle registrations fell by 24.2% in January 2001 compared with the previous month. This is consistent with the usual pattern for the month of January each year. Falls were recorded in all states and territories.

- For further information about these and related statistics, contact Robin Walden on Brisbane 07 3222 6180, or the National Information Service on 1300 135 070.

NOTES

FORTHCOMING ISSUES

ISSUE	RELEASE DATE
February 2001	30 March 2001
March 2001	27 April 2001
April 2001	25 May 2001
May 2001	29 June 2001
June 2001	27 July 2001
July 2001	31 August 2001

CHANGES IN THIS ISSUE

There are no changes in this issue but revisions are expected to apply in the next issue.

VICTORIA ADJUSTMENTS

Registrations reported for Victoria have been subject to higher than usual lags (i.e. reporting of registrations for previous month(s)) since October 2000. An indication of the effect on the published values for Victoria is shown below. The net effect of the lags on the January estimates is not yet clear but it should be relatively small.

Month	Published value	Adjustment for lags	Adjusted value
October 2000	17 415	1 214	18 629
November 2000	16 864	3 034	19 898
December 2000	21 607	-665	20 942

TREND REVISIONS

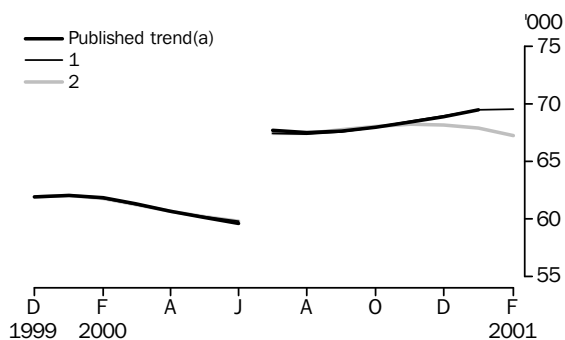
The most recent trend estimates are likely to be revised when new seasonally adjusted estimates become available.

The graph below presents the effect of two possible scenarios on the previous trend estimates:

TAKE CARE!
Trend estimates are revised as new monthly data become available.

- 1 The February seasonally adjusted estimate for total vehicle registrations is higher than the January seasonally adjusted estimate by 4.1%.
- 2 The February seasonally adjusted estimate for total vehicle registrations is lower than the January seasonally adjusted estimate by -4.1%.

The percentage change of 4.1% was chosen because the average absolute percentage change, based on the last 11 years, has been 4.1%.

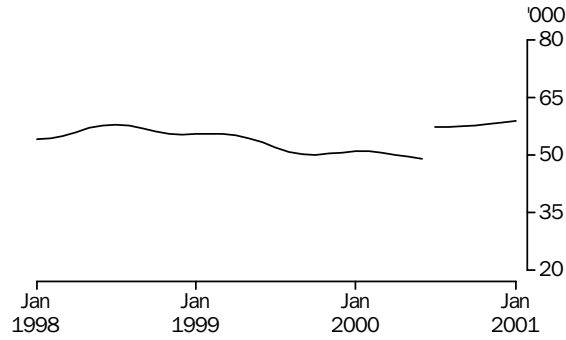


Dennis Trewin
Australian Statistician

VEHICLE REGISTRATIONS BY TYPE: Trend series

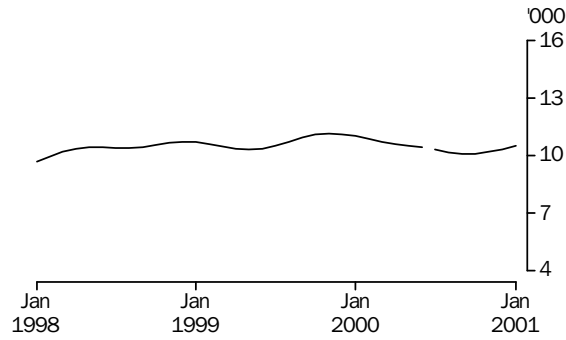
PASSENGER VEHICLES

There is a trend break in series resulting from the introduction of the New Tax system.



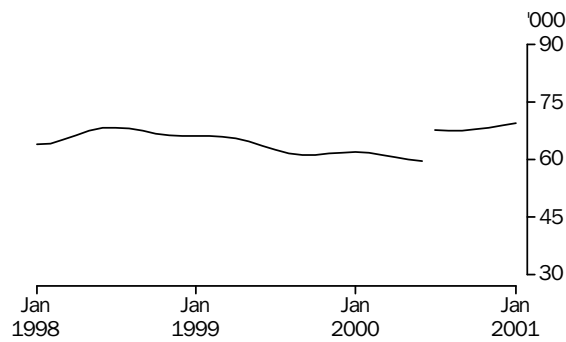
OTHER VEHICLES

There is a trend break in series resulting from the introduction of the New Tax system.



TOTAL VEHICLES (EXCLUDING MOTOR CYCLES)

There is a trend break in series resulting from the introduction of the New Tax system.



NEW MOTOR VEHICLES, Registrations By Type: All series(a)(b)

Month	Passenger vehicles	Other vehicles	Total
ORIGINAL			
1999			
November	54 009	11 853	65 862
December	54 941	11 705	66 646
2000			
January	42 236	8 021	50 257
February	51 401	10 809	62 210
March	56 257	11 457	67 714
April	41 649	8 664	50 313
May	51 554	12 585	64 139
June	45 521	15 358	60 879
July	69 632	9 354	78 986
August	65 811	10 557	76 368
September	54 759	9 227	63 986
October	55 529	9 520	65 049
November	58 642	9 751	68 393
December	63 206	10 199	73 405
2001			
January	47 447	8 182	55 629
SEASONALLY ADJUSTED			
1999			
November	51 052	11 330	62 382
December	51 449	11 723	63 172
2000			
January	54 233	11 405	65 638
February	51 921	10 991	62 912
March	50 435	10 403	60 838
April	50 074	10 417	60 491
May	48 821	10 873	59 694
June	37 610	10 985	48 595
July	70 133	9 547	79 680
August	63 915	10 572	74 487
September	58 129	10 171	68 300
October	56 420	9 945	66 365
November	55 704	9 489	65 193
December	64 315	10 947	75 262
2001			
January	56 211	10 710	66 921
TREND ESTIMATES			
1999			
November	50 430	11 178	61 608
December	50 779	11 128	61 907
2000			
January	51 035	11 026	62 061
February	50 964	10 884	61 848
March	50 581	10 732	61 313
April	50 082	10 614	60 696
May	49 635	10 541	60 176
June	49 172	10 455	59 627
July	57 386	10 323	67 709
August	57 321	10 184	67 505
September	57 534	10 104	67 638
October	57 873	10 111	67 984
November	58 243	10 199	68 442
December	58 561	10 325	68 886
2001			
January	58 986	10 512	69 498

(a) Trend estimates for July 2000 to December 2000 have been revised.

(b) Trend break in series resulting from the introduction of the New Tax System.

NEW MOTOR VEHICLES, Registrations By Type: Original

Month	Passenger vehicles	Light commercial vehicles	Rigid trucks	Articulated trucks	Non-freight carrying trucks	Buses	Total (excludes motor cycles)	Motor cycles
1999								
November	54 009	9 793	1 245	358	128	329	65 862	3 179
December	54 941	9 715	1 249	268	96	377	66 646	2 850
2000								
January	42 236	6 821	673	186	48	293	50 257	2 425
February	51 401	9 102	997	278	69	363	62 210	2 604
March	56 257	9 585	1 176	288	56	352	67 714	2 945
April	41 649	7 127	968	198	58	313	50 313	2 518
May	51 554	10 625	1 348	196	61	355	64 139	2 770
June	45 521	13 170	1 354	193	113	528	60 879	2 259
July	69 632	7 508	1 047	485	62	252	78 986	2 842
August	65 811	8 689	1 138	331	90	309	76 368	3 125
September	54 759	7 436	1 057	297	148	289	63 986	3 008
October	55 529	7 776	1 151	285	73	235	65 049	3 143
November	58 642	7 972	1 118	284	100	277	68 393	3 344
December	63 206	8 516	1 039	231	132	281	73 405	2 804
2001								
January	47 447	7 053	623	221	54	231	55 629	2 670

NEW MOTOR VEHICLES, Registrations By State: All series(a)(b)

Month	New South Wales	Victoria	Queensland	South Australia	Western Australia	Tasmania	Northern Territory	Australian Capital Territory	Australia
ORIGINAL									
1999									
November	24 536	17 771	9 919	4 335	6 134	1 256	700	1 211	65 862
December	23 301	17 884	10 939	4 423	6 385	1 899	628	1 187	66 646
2000									
January	16 996	14 991	8 221	2 926	4 842	952	471	858	50 257
February	22 131	16 613	11 056	3 868	5 784	992	587	1 179	62 210
March	23 819	17 530	13 245	3 994	6 189	1 128	659	1 150	67 714
April	17 781	12 964	9 572	2 900	4 627	937	611	921	50 313
May	22 781	16 487	12 061	3 896	5 843	1 126	760	1 185	64 139
June	21 062	15 074	12 968	3 663	5 097	1 059	897	1 059	60 879
July	27 323	21 037	15 649	4 616	7 360	1 205	555	1 241	78 986
August	27 024	19 878	14 357	4 538	7 086	1 472	701	1 312	76 368
September	20 908	17 197	12 122	4 138	6 386	1 545	590	1 100	63 986
October	22 095	17 415	12 428	4 241	5 978	1 241	601	1 050	65 049
November	24 062	16 864	12 948	4 534	6 610	1 436	614	1 325	68 393
December	23 547	21 607	13 362	4 649	6 407	2 035	601	1 197	73 405
2001									
January	18 657	15 531	10 214	3 436	5 286	1 041	432	1 032	55 629
SEASONALLY ADJUSTED									
1999									
November	22 436	16 912	10 079	4 005	5 869	1 217	707	1 157	62 382
December	23 247	16 462	10 472	4 099	5 883	1 231	686	1 092	63 172
2000									
January	21 597	20 714	10 339	3 880	6 021	1 306	658	1 123	65 638
February	22 332	16 665	11 250	3 920	5 672	1 213	646	1 214	62 912
March	21 470	15 526	11 869	3 662	5 535	1 187	536	1 053	60 838
April	21 189	15 993	11 246	3 518	5 516	1 270	640	1 119	60 491
May	20 655	15 756	11 294	3 779	5 336	1 108	636	1 130	59 694
June	17 117	12 014	9 882	2 858	4 156	1 068	633	867	48 595
July	26 736	21 604	15 396	4 697	8 218	1 156	631	1 242	79 680
August	27 425	18 682	14 076	4 370	6 760	1 327	684	1 163	74 487
September	22 634	18 105	13 336	4 303	6 741	1 328	675	1 178	68 300
October	22 151	17 641	12 973	4 358	6 225	1 253	634	1 130	66 365
November	22 673	15 752	13 177	4 176	6 217	1 390	595	1 213	65 193
December	25 234	21 867	13 688	4 688	6 423	1 393	742	1 227	75 262
2001									
January	22 114	19 718	11 775	4 333	5 886	1 311	553	1 231	66 921
TREND ESTIMATES									
1999									
November	22 160	16 546	10 092	3 936	5 866	1 223	686	1 099	61 608
December	22 218	16 472	10 374	3 940	5 877	1 236	672	1 118	61 907
2000									
January	22 173	16 376	10 741	3 913	5 836	1 242	651	1 129	62 061
February	21 968	16 222	11 080	3 853	5 732	1 231	630	1 132	61 848
March	21 636	16 022	11 319	3 775	5 616	1 204	617	1 124	61 313
April	21 323	15 838	11 425	3 703	5 499	1 176	613	1 119	60 696
May	21 094	15 719	11 408	3 655	5 399	1 158	623	1 120	60 176
June	20 917	15 548	11 307	3 617	5 314	1 163	636	1 125	59 627
July	22 449	17 794	13 419	4 333	6 740	1 191	649	1 134	67 709
August	22 483	17 682	13 337	4 313	6 648	1 237	657	1 148	67 505
September	22 626	17 766	13 292	4 311	6 539	1 285	656	1 163	67 638
October	22 810	18 058	13 212	4 327	6 423	1 323	652	1 179	67 984
November	23 003	18 504	13 083	4 362	6 302	1 347	646	1 195	68 442
December	23 163	19 017	12 913	4 396	6 185	1 363	637	1 212	68 886
2001									
January	23 326	19 601	12 804	4 452	6 096	1 366	627	1 226	69 498

(a) Trend estimates for July 2000 to December 2000 have been revised.

(b) Trend break in series resulting from the introduction of the New Tax System.

NEW PASSENGER VEHICLES, Top Make/models: **Original**—January 2001

<i>Make/Model</i>	<i>New South Wales</i>	<i>Victoria</i>	<i>Queensland</i>	<i>South Australia</i>	<i>Western Australia</i>	<i>Tasmania</i>	<i>Northern Territory</i>	<i>Australian Capital Territory</i>	Australia
Holden									
Commodore/Calais	1 631	1 665	998	424	475	75	15	105	5 388
Astra	561	467	235	81	106	33	9	53	1 545
Vectra	201	193	94	20	24	9	1	10	552
Other	389	345	210	66	118	21	3	20	1 172
Total	2 782	2 670	1 537	591	723	138	28	188	8 657
Toyota									
Corolla	867	923	321	92	249	83	40	50	2 625
Camry/Vienta	606	627	378	77	119	34	21	22	1 884
Avalon	214	236	228	52	83	5	10	15	843
Other	1 075	870	513	201	288	42	63	38	3 090
Total	2 762	2 656	1 440	422	739	164	134	125	8 442
Ford									
Falcon/Fairmont	935	951	566	200	252	42	17	61	3 024
Laser	389	389	217	125	79	32	2	26	1 259
Festiva	113	58	35	34	11			2	253
Other	174	207	85	45	60	5	2	17	595
Total	1 611	1 605	903	404	402	79	21	106	5 131
Mitsubishi									
Lancer	611	610	325	117	209	21	5	52	1 950
Magna	419	276	249	144	114	17	6	43	1 268
Pajero	209	146	154	26	55	11	7	8	616
Other	217	115	83	34	51	11	1	13	525
Total	1 456	1 147	811	321	429	60	19	116	4 359
Hyundai									
Accent	739	607	289	115	284	55	10	38	2 137
Lantra/Elantra	235	153	136	43	136	18	2	9	732
Sonata	87	37	40	6	20	1	1	1	193
Other	118	78	90	17	95	4		8	410
Total	1 179	875	555	181	535	78	13	56	3 472
Nissan									
Pulsar	603	472	311	95	157	32	16	57	1 743
Patrol	200	138	192	38	144	7	13	4	736
Pathfinder	120	78	39	11	32	1	1	3	285
Other	104	95	56	18	31	2		8	314
Total	1 027	783	598	162	364	42	30	72	3 078
Honda									
CRV	416	251	133	37	99	14	4	12	966
Civic	359	155	106	50	71	15	1	20	777
Accord	81	48	26	13	30	4	3	2	207
Other	174	97	49	17	44	6	2	7	396
Total	1 030	551	314	117	244	39	10	41	2 346

EXPLANATORY NOTES

INTRODUCTION

- 1** This publication presents monthly data for registrations of new motor vehicles.
- 2** The statistics in this publication use the Vehicle Identification Number (VIN), adopted by the State and Territory motor vehicle registration authorities. The information contained in the VIN allows more accurate classification of vehicles. In the case of some States, data processed using the VIN system are not strictly comparable with data processed prior to December 1990.

SCOPE AND COVERAGE

- 3** Motor vehicle registration statistics are obtained from State and Territory motor vehicle registration authorities. The statistics reflect information recorded in registration documents. While the statistics do not depart significantly from actual registrations during the period, a number of registrations processed in a month actually relate to vehicles registered prior to that month.
- 4** New motor vehicle registrations are obtained from New South Wales, Victoria, Queensland and Western Australia registration authorities on a weekly basis. Other registries provide data for each calendar month. The ABS processes the weekly registration data provided for the above-mentioned States and includes data for the relevant month in this publication. Data referring to the next month are withheld and included in the next month's publication. In some months, the ABS processes five weeks of data for the above States, while other months include four weeks of data. In months where five weeks of data are processed and depending on the actual pattern of registration processing, it is possible that there will be a greater number of registrations recorded because the carry forward from the previous month is likely to be greater than the carry over to the next month.
- 5** The scope of the statistics:
 - includes:
 - passenger vehicles
 - light commercial vehicles
 - trucks
 - buses
 - motorcycles (note: not included in totals)
 - vehicles with diplomatic and consular plates
 - State and Commonwealth owned vehicles
 - excludes:
 - vehicles belonging to the defence forces
 - recreation vehicles such as trail bikes and sand dune buggies (in those States where registration is required).

SEASONAL ADJUSTMENT

- 6** Seasonal adjustment is a means of removing the estimated effects of normal seasonal variation from the series so that the effects of other influences can be more clearly recognised.
- 7** Seasonal adjustment does not remove from the series the effect of irregular or non-seasonal influences (e.g. the introduction of new models, processing delays, industrial disputes).

EXPLANATORY NOTES

SEASONAL ADJUSTMENT

continued

8 Irregular influences that are highly volatile can make it difficult to interpret the series even after adjustment for seasonal variation.

9 Extreme care should be exercised in using the seasonally adjusted series for new motor vehicle registrations in Tasmania, the Northern Territory and the Australian Capital Territory. The small numbers and volatile nature of these data makes reliable estimation of the seasonal pattern very difficult.

10 Seasonally adjusted series are calculated for the 'Passenger vehicles', 'Other vehicles' and 'Total vehicles' series for each State and Territory and are aggregated to obtain the total for Australia.

11 Seasonal adjustment factors are analysed and revised as necessary annually.

TREND ESTIMATES

12 The smoothing of seasonally adjusted series to create trend estimates reduces the impact of the irregular component of the seasonally adjusted series. The trend estimates are derived by applying a 13-term Henderson-weighted moving average to the respective seasonally adjusted series. These trend series are used to analyse the underlying behaviour of the series over time.

13 While this smoothing technique enables trend estimates to be produced for the latest month, it does result in revisions to the trend estimates for the most recent months as data for subsequent months become available. Generally subsequent revisions become smaller and after three months, usually have a negligible impact on the series. Changes in the original data and re-estimation of seasonal factors may also lead to revisions to the trend. For more information, see *A Guide to Interpreting Time Series—Monitoring 'Trends'—an Overview* (Cat. no. 1348.0) or contact the Assistant Director, Time Series Analysis on (02) 6252 6345.

RELATED PUBLICATIONS

14 For a more detailed break-up of the monthly figures presented here, enquiries should be made to the National Information Service on 1300 135 070 or to Client Services in any ABS office.

Annual data on total vehicle registrations are published in *Motor Vehicle Census, Australia, 31 October 1999* (Cat. no. 9309.0).

SYMBOLS AND OTHER USAGES

n.p. not available for publication, but included in totals.

G L O S S A R Y

Articulated trucks	Vehicles constructed primarily for load carrying consisting of a prime mover having no significant load carrying area but with a turn table device which can be linked to a trailer. With or without a trailer the gross combination mass will be 3.5 tonnes or more.
Buses	Vehicles constructed for the carriage of passengers. Included are all passenger vehicles with 10 seats or more, including the driver's seat.
Light commercial vehicles	Describes goods carrying vehicles less than 3.5 tonnes gross vehicle mass. Included are utilities, panel vans, cab-chassis and forward control vehicles (whether four-wheel drive or not).
Motor cycles	Includes 2 and 3 wheeled mopeds, scooters, motor tricycles and motor cycles with side cars.
Non-freight carrying trucks	Includes specialist vehicles such as ambulances, mobile cranes or vehicles fitted with special purpose equipment and having no goods carrying capacity.
Passenger vehicles	Includes cars, station wagons, four-wheel drive passenger vehicles and forward control passenger vehicles with up to nine seats (including the driver).
Registrations	This includes all registrations processed by the motor vehicle registration authorities in the States and Territories during the relevant period.
Rigid trucks	Vehicles constructed primarily for load carrying with a gross vehicle mass of 3.5 tonnes or more.
VIN	The Vehicle Identification Number (VIN) uniquely identifies each vehicle. Embedded in the number are details of make and model together with other relevant information about the vehicle. The VIN is collected by the motor vehicle registration authorities at the time of registration.

FOR MORE INFORMATION...

- INTERNET* **www.abs.gov.au** the ABS web site is the best place to start for access to summary data from our latest publications, information about the ABS, advice about upcoming releases, our catalogue, and Australia Now—a statistical profile.
- LIBRARY* A range of ABS publications is available from public and tertiary libraries Australia-wide. Contact your nearest library to determine whether it has the ABS statistics you require, or visit our web site for a list of libraries.
- CPI INFOLINE* For current and historical Consumer Price Index data, call 1902 981 074 (call cost 77c per minute).
- DIAL-A-STATISTIC* For the latest figures for National Accounts, Balance of Payments, Labour Force, Average Weekly Earnings, Estimated Resident Population and the Consumer Price Index call 1900 986 400 (call cost 77c per minute).

INFORMATION SERVICE

Data which have been published and can be provided within five minutes are free of charge. Our information consultants can also help you to access the full range of ABS information—ABS user-pays services can be tailored to your needs, time frame and budget. Publications may be purchased. Specialists are on hand to help you with analytical or methodological advice.

- PHONE* **1300 135 070**
- EMAIL* **client.services@abs.gov.au**
- FAX* 1300 135 211
- POST* Client Services, ABS, GPO Box 796, Sydney 1041

WHY NOT SUBSCRIBE?

ABS subscription services provide regular, convenient and prompt deliveries of ABS publications and products as they are released. Email delivery of monthly and quarterly publications is available.

- PHONE* 1300 366 323
- EMAIL* subscriptions@abs.gov.au
- FAX* 03 9615 7848
- POST* Subscription Services, ABS, GPO Box 2796Y, Melbourne 3001



2930100001011
ISSN 1323-4528

RRP \$17.00

© Commonwealth of Australia 2001

Produced by the Australian Bureau of Statistics